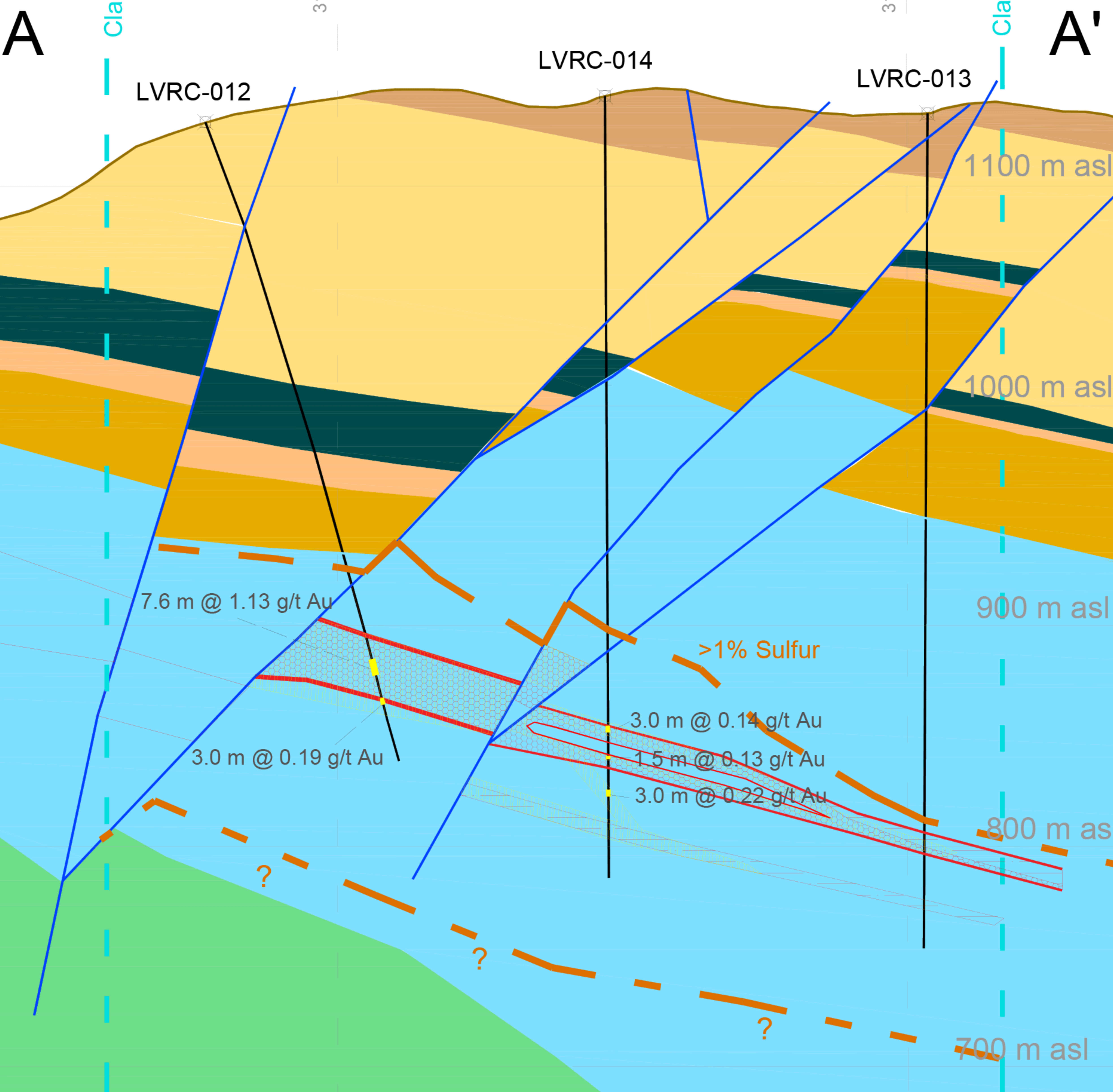


Looking NW50°



- | | | | | | | | |
|----------------------|--|-----------------------------------|----------------------|--|--|--|-----------------------------|
| Upper group sequence | | Tk-Rhyolite | Lower volcanic group | | Dacitic dome complex or laccolith | | Silicic alteration (strong) |
| | | TB-Basaltic andesite | | | Dacitic vitreous-crystal tuff | | Silicic alteration (weak) |
| | | Tm-Tl (Ignimbrite sequence) | | | Bedded Andesite tuff and minor lapilli | | Au anomaly |
| | | Tn unit (andesitic flow) | | | Undifferentiated lower volcanics | | Interceptions >0.1 g/t Au |
| | | To unit, Rhyolitic tuff | | | Fault | | Outline for >1% sulfur |
| | | Tplt unit, Rhyodacite welded tuff | | | RC drill hole | | |